



Population variation of the fall armyworm, *Spodoptera frugiperda*, in the Western Hemisphere

Pete L. Clark¹, Jaime Molina-Ochoa², Samuel Martinelli³, Steven R. Skoda⁴, David J. Isenhour⁵, Donald J. Lee⁶, Jeffrey T. Krumm¹ and John E. Foster¹

¹ University of Nebraska Department of Entomology, 312 F Plant Industry Building, Lincoln, NE, 68583 0816, USA

² Facultad de Ciencias Biológicas y Agropecuarias, Universidad de Colima Apartado postal no. 36, Tecmán, Colima 28100, Mexico

³ Laboratório de Resistência de Artrópodes a Pesticidas (ESALQ/USP), Av. Pádua Dias, 11 Caixa Postal 09, CEP:13418-900, Piracicaba-SP, Brazil

⁴ USDA-ARS-SPASRU Screwworm Research Unit, Panama City, Republic of Panamá

⁵ Monsanto Company 800 North Lindbergh Blvd., St. Louis, MO, 63167, USA

⁶ University of Nebraska Department of Agronomy, Lincoln, NE 68583 – 0915, USA

Abstract

Spodoptera frugiperda (J.E. Smith) (Lepidoptera: Noctuidae), the fall armyworm is the most economically important maize pest in the western hemisphere. This research focused on the genetic variability of the maize host strain because there is a lack of information in this area of *S. frugiperda* research. Amplified fragment length polymorphism (AFLP) was used to assess the genetic variability of *S. frugiperda* over a large geographic area. Twenty populations were collected from the maize, one population was collected from princess tree, one population was collected from lemon tree, and one population was collected from bermudagrass. The 23 populations were from Mexico, the continental United States, Puerto Rico, Brazil, and Argentina. The objective of this research was to evaluate whether the majority of genetic variability was within populations or between populations. The AFLP results showed that the majority of the genetic variability is within populations and not between populations, indicating minor gene flow and suggesting that *S. frugiperda* in the Western Hemisphere are an interbreeding population.

Keywords: fall armyworm, molecular genetics, AFLP, AMOVA

Correspondence: pete.l.clark@monsanto.com, jmolina18@hotmail.com, samuelmartinelli@hotmail.com, skodas@si.edu, david.isenhour@monsanto.com, dlee1@unl.edu, jeffrey.krumm@syngenta.com, jfoster@unlnotes.unl.edu

Received: 19.11.2005 | Accepted: 20.5.2006 | Published: 25.1.2007

Copyright: Creative Commons Attribution 2.5

ISSN: 1536-2442 | Volume 7, Number 5

Cite this paper as:

Clark PL, Molina-Ochoa J, Martinelli S, Skoda SR, Isenhour DJ, Lee DJ, Krumm JT, Foster JE. 2007. Population variation of the fall armyworm, *Spodoptera frugiperda*, in the Western Hemisphere. 10pp. *Journal of Insect Science* 7.05, available online: insectscience.org/7.05

Introduction

The fall armyworm, *Spodoptera frugiperda* (J.E. Smith) (Lepidoptera: Noctuidae) is a migratory pest endemic to the Western Hemisphere that occurs from Southern Canada to Argentina (Johnson 1987). *S. frugiperda* is phytophagous and causes considerable economic losses in several important crops such as maize, sorghum, rice, cotton, alfalfa, forage grasses, and occasionally other crops in most of the countries of its range (Sparks 1986). *S. frugiperda* was considered a single species but, since about two decades ago, two morphologically indistinguishable host strains have been identified (Pashley 1986); one strain feeds primarily on maize and sorghum (corn strain), and the other strain feeds on rice and bermudagrass (rice strain) (Pashley et al. 1985; Pashley 1986). The fact that no consistent morphological differences have been found between the two strains, suggests that the strains are very closely related and probably of recent origin (Veenstra et al. 1995). Host strains also exhibit differences in development and survivorship when fed on varieties of bermudagrass (Pashley et al. 1987). They also show reproductive incompatibility (Pashley & Martin 1987), reproductive isolating mechanisms (Pashley et al. 1992), behavioral and physiological factors such as food consumption, utilization, and detoxification enzyme activities (Veenstra et al. 1995), and developmental and reproductive traits when fed on different host plants (Pashley et al. 1995), suggesting that the rice strain larvae were more specialized and affected by their host plant than larvae in the corn host strain.

A rapid PCR based method has been described for detecting large tandem repeat clusters of the *S. frugiperda* rice strain sequences from individual adult moths (Nagoshi and Meagher 2003), and mitochondrial markers have been described for identifying *S. frugiperda* host strains (Meagher & Gallo-Meagher 2003). Most of these studies have been carried out with *S. frugiperda* populations from the Caribbean basin and the Southeastern United States collected from rice and maize, but there is a lack of knowledge of the genetic variation in large-scale geographic populations of *S. frugiperda* collected from maize. Pashley et al. 1985 used four Mexican geographic populations collected from maize. Three of the four populations were collected in proximity to the Gulf of Mexico: Tampico Tamulipas, Tuxpan Veracruz, and Campeche Campeche; and one

population collected at Arriaga Chiapas located at the southeastern coast of the Pacific Ocean. Other *S. frugiperda* populations were from southern Florida, Louisiana, Texas and Puerto Rico. They found that the genetic differences were largely due to a highly divergent Puerto Rican population collected from rice, all other collections were from maize. Additionally, geographic populations of *S. frugiperda* from Mexico collected from maize exhibited biological differences such as developmental rate, reproductive compatibility, and susceptibility to chemical and biological pesticides according to Lopez-Edwards et al. 1999.

AFLP markers were originally developed for plants with small genomes but also became highly effective for plants with larger genomes. AFLP is a tool that generates highly polymorphic molecular markers that aid in building linkage maps and assessing genetic variation. AFLP has been successfully used for the study of insects (Hawthorne 2001; Parsons & Shaw 2002; Reineke et al. 1999; Takami et al. 2004; Tan et al. 2001; Timmermans et al. 2005), including *S. frugiperda* (McMichael & Prowell 1999; Busato et al. 2005).

AFLP is based on selective PCR amplification of restriction fragments from a total digest of genomic DNA. The amplification is achieved by using adapted and restriction site sequences as target sites for primer annealing. Selective amplification is achieved by amplifying fragments that have primer extensions that match nucleotides flanking the restriction sites, which allows sets of restriction fragments to be visualized by PCR without prior knowledge of the nucleotide sequence (Vos et al. 1995). A drawback of AFLP is that the procedure may require large amounts of DNA and the process requires multiple operations (Hoy 2003). In the specific case of this research, *S. frugiperda* are relatively large and provided the amounts of DNA needed. AFLP products are sorted according to size using gel electrophoresis. Two types of gels are used: agarose gels may be used to separate fragments from 300 base pairs (bp) to 1 kilobase (kb) pairs in size; and polyacrylamide are the best choice for smaller fragments (10 bp to 20 kb) (Dowling et al. 1996).

The objective of this research was to assess the genetic variability of *S. frugiperda* populations over a large geographic area. AFLP markers were selected to measure genetic variability between 20 *S. frugiperda* populations collected from maize



Figure 1. Map of the Western Hemisphere, red asterisks represent the approximate location of a collection.

(*Zea mays*), one population collected from lemon tree (*Citrus limon*), one population collected from princess tree (*Paulownia tomentosa*), and one population collected from bermudagrass (*Cynodon dactylon*).

Materials and Methods

Samples were collected from each location (Table 1, Figure 1). Samples collected were shipped fresh, in 95% ETOH, or lyophilized. A preliminary study was conducted to evaluate lyophilization as a viable method to preserve *S. frugiperda* DNA for future analysis. The results showed that lyophilized *S. frugiperda* larvae yielded amounts of DNA suitable for molecular analysis similar to fresh *S. frugiperda* larvae. Populations were collected from the Southern United States, Puerto Rico, Mexico, Brazil, and Argentina for this study. Larvae were collected from maize during the vegetative to early reproductive growth stage. Larvae were identified as *S. frugiperda* in the field at the time of collection and again at the Insect Genetics Laboratory at the University of

Nebraska using morphological characteristics.

Table 1. Location and host plant of collected Spodoptera populations, larvae were collected during late vegetative to early reproductive growth stage from maize.

Population ID	Country	State/ Province	Host Plant
Tam	Mexico	Tamulipas	Maize
Sin	Mexico	Sinaloa	Maize
Jal	Mexico	Jalisco	Maize
M3	Mexico	Nayarit	Maize
Son	Mexico	Sonora	Maize
Col	Mexico	Colima	Maize
Slp	Mexico	San Luis Potosi	Maize
Yuc	Mexico	Yucatan	Maize
M2	Mexico	Jalisco	Maize
M1	Mexico	Jalisco	Maize
B1	Brazil	Minas Gerais	Maize
G	U.S.	Florida	Maize
Rp	U.S.	Mississippi	Royal Paulonia
A5	Argentina	Santa Fe	Maize
A4	Argentina	Santiago	Maize
A3	Argentina	Tucuman	Lemon Tree (citrus)
A2	Argentina	Chaco	Maize
A1	Argentina	Salta	Maize
Ver	Mexico	Veraacruz	Maize
Gro	Mexico	Guerrero	Maize
Fbg	U.S.	Mississippi	Bermudagrass
Iowa	U.S.	Iowa	Maize
Pr1	U.S.	Puerto Rico	Maize

DNA was isolated from seven larvae (7 larvae were used because it was the maximum number of successful extractions for two populations from Argentina, making all populations consistent) per population using a modification of Black & Duteau's (1997) CTAB extraction protocol. Larvae were collected/preserved using three methods: 1) Fresh and then frozen at -80°C ; 2) Larvae collected and placed in vials containing 95% ETOH, then triple rinsed in double distilled H_2O and stored at -80°C and; 3) Larvae were lyophilized in the country of collection then shipped at ambient temperature and stored dry at -80°C . Larvae were homogenized in 500 μl extraction buffer (100 mM Tris-HCL pH 8.0, 1.4M NaCl, 0.02m EDTA, 2% CTAB, and 0.2% β -mercaptoethanol). Proteinase K (concentration of 200 $\mu\text{g}/\text{ml}$ extraction buffer) was added to the homogenate for 2 hrs at 65°C . RNase A (500 $\mu\text{g}/\text{ml}$) was added to the homogenate and held for 3 hrs at 37°C . After RNA and protein were removed from each sample, the homogenate was centrifuged at 13,000 rpm for 5 min at room temperature. The supernatant was extracted with 500 μl of chloroform: isoamyl alcohol (24:1) by centrifugation at 14,000 rpm for 20 min. to separate the phases. The aqueous phase was transferred into an autoclaved 1.5ml micro centrifuge tube and the chloroform: isoamyl step was repeated. DNA was precipitated by adding 400 μl chilled (-20°C) isopropanol to the aqueous phase and incubated at 4°C for 8 h. After incubation the precipitate was centrifuged at 13,000 rpm at 4°C for 30 min. The isopropanol was decanted off; the DNA pellet was rinsed with 500 μl 100% ETOH and centrifuged at 13,000 rpm at 4°C for 5 min and repeated a second time. The ETOH was decanted off and the pellet was air dried at 24°C for 45 min. 50 μl 1X TE buffer (10mM Tris-HCL pH 8.0; 0.1 mM EDTA) was poured onto the DNA pellet and stored at 4°C for 8 hours. After the DNA was re-suspended in 1X TE buffer, each sample was quantified by running a 1% agarose gel with a λ DNA marker (22.2 ng/ μl). TE buffer (1X) was added to DNA samples until they reached a concentration of 22.2 ng/ μl concentration of genomic DNA. The agarose gels were visualized using Genomics Solutions software.

A modified AFLP (Vos et al. 1995) procedure was used as a molecular marker tool to assess the genetic variability of *S. frugiperda* populations. The AFLP procedure was carried out in 3 steps: 1)

DNA template preparation; 2) DNA template preamplification and; 3) AFLP Selective amplification

DNA Template Preparation. Restriction digestion was completed using 7 μl of quantified genomic DNA (155.5 ng) that was incubated with *EcoRI* and *MseI* restriction endonucleases (New England Biolabs, www.neb.com) for 2.5 hrs at 37°C in solution containing 1.25 μl of 10X One-Phor-All buffer (Amersham Pharmacia biotech, www.apbiotech.com), 0.125 μl of 10 U/ μl *MseI* enzyme (1.25U/reaction), 0.0625 μl of 20 U/ μl *EcoRI* enzyme (1.25 U/reaction), 0.125 μl of 10 ng/ml BSA (bovine serum albumin) (New England Biolabs), and autoclaved nanopure H_2O . Five μl of ligation mixture containing 0.15 μl of T4 DNA ligase and 0.5 μl of 10X T4 ligase buffer (New England Biolabs), 0.5 μl of 5 pmoles/ μl *EcoRI* adapter, 0.5 μl of 5 pmoles/ μl *MseI* adapter (Operon Technologies, www.operon.com), and 3.35 μl autoclaved nanopure water was added to the restriction digestion product and was incubated for 10 hrs at 25°C using an MJ Research (www.operon.com) PTC-200 Peltier Thermo Cycler (used for all PCR reactions); the ligation mixture was diluted by adding 135 μl of 1X TE buffer to each sample.

Preamplification of DNA Template. A master mix of 8 μl pre-amp primer mix II containing two oligonucleotide primers, *EcoRI* adapted ends and *MseI* ends (Life technologies, www.operon.com), 1.0 μl of 10X PCR buffer containing 15mM MgCl_2 and 0.20 μl of 5 U/ μl *AmpliTaq* DNA polymerase (1.25 U/reaction) (Applied Biosystems, www.appliedbiosystems.com) were added to each reaction tube containing 1 μl of diluted ligation product and amplified using 20 PCR cycles of 30s at 94°C , 1 min at 56°C , and 1 min 72°C . The oligonucleotide primers in the pre-amp primer mix II are complementary to the adapter/restriction site with *MseI* primer containing one selective nucleotide (M+1 primer) and *EcoRI* primer containing no selective nucleotide (E+0 primer). Each preamplification product was diluted with 190 μl of nanopure H_2O .

AFLP Selective Amplification. Five primers were selected, in four primer pair combinations for selective amplification (Table 2). A selective amplification master mix was made using 2 μ l of diluted preamplification product 4.2 μ l of autoclaved nanopure water, 1.2 μ l of 10X PCR buffer, 0.72 μ l 25 mM MgCl₂, 0.08 μ l of 5 U/ μ l *AmpliTaq* polymerase (Applied Biosystems), 2.0 μ l of *MseI* primer (Invitrogen, www.invitrogen.com) and 0.3 μ l of 1.0 pmol/ μ l IRD-700 labeled *EcoRI* primer (LI-COR, www.licor.com). The “Touchdown” PCR program: 1 cycle of 30s at 94° C, 30s at 65° C, and 1 min at 72° C; 12 cycles of 30s at 94° C, 30s at 65° C (lowering the annealing temperature by 0.7° C) and 1 min at 72° C; 23 cycles of 30s at 94° C, 30s at 56° C, 1 min at 72° C; then hold at 4° C was used for selective amplification. Reactions were stopped prior to loading the selective amplification product on polyacrylamide gels by adding 2.5 μ l stop solution (LI-COR) to each reaction tube, then holding at 95° C for 3 min., then cooling to 4° C prior to loading the PAGE gel. 42 samples were run per gel (6 populations of 7 samples each), and IRD-labeled 50-700 bp size marker (LI-COR) in two lanes. 1 μ l of marker was loaded into lanes 1 and 44, lanes 2 through 43 contained 1 μ l of selective amplification product. Electrophoresis through KB^{plus} 6.5% ready-to-use gel matrix (LI-COR) was used to separate the DNA and the bands were detected by a LI-COR Gene Read IR 4200 sequencer.

Table 2. Primers used for selective amplification for AFLP.

Primer	Primer Type	Sequence (5' to 3')
E (N+0+3)	EcoRI IR 700labeled Primer	GAC TGC GTA CCA ATT C ACT
M(N+1+2)	MseI Unlabeled Primer	GAT GAG TCC TGA GTA A CAC
M(N+1+2)	MseI Unlabeled Primer	GAT GAG TCC TGA GTA A CAG
M(N+1+2)	MseI Unlabeled Primer	GAT GAG TCC TGA GTA A CTA
M(N+1+2)	MseI Unlabeled Primer	GAT GAG TCC TGA GTA A CTC

AFLP bands were evaluated using an IRD-700 labeled 50-700bp marker as a reference and scored using SAGA Generation 2 Software Version 3.2 (LI-COR, Lincoln, NE). The data set consisted of 1's and 0's (presence or absence respectively) as analyzed from each AFLP gel.

Coefficient of variation is a tool used to assess whether enough data were used (i.e. enough loci, enough primer pair combinations, or both) for proper genetic analysis. DBOOT version 1.1

(Coelho 2001) was used for bootstrap analysis (10,000 iterations) of selected loci, to assess precision for genetic variation and gene flow analysis.

Popgene version 1.32 (Yeh & Boyle 1997) was used to assess the degree of polymorphisms both within and between populations of *S. frugiperda*. Genetic variation (h) between populations was measured using Nei's gene diversity index. Popgene considered a locus polymorphic if the frequency of the most common allele fell below a 0.95 threshold. Genetic variation between populations was assessed using G_{ST}. G_{ST} is expressed as the heterozygosity (H) of a single population subtracted from the heterozygosity of the total population, divided by the heterozygosity of the total population (G_{ST} = H_{Total} - H_{Single} / H_{Total}). Gene flow was estimated from G_{ST}, expressed as (Nm) = 0.5 (1- G_{ST}) (McDermott and McDonald 1993). Popgene assesses heterozygosity as differences in banding patterns or polymorphisms between individuals or populations.

A binary data matrix was used to estimate genetic similarity using the Jaccard index through the SIMQUAL procedure using NTSYSpc (Rohlf 2000). The similarity coefficient among all populations was estimated using Jaccard:

$$Jac_{ij} = \frac{a}{a + b + c}$$

Where:

a = number of cases where a band occurs simultaneously in both individuals

b = number of cases when a band occurs only in the ith individual

c = number of cases where the band occurs on in the jth individual

The Jaccard index was chosen because the coefficient of similarity considers only shared 1s as contributing to the similarity of individuals and disregards shared 0s. However, there is no general consensus between the various coefficients (Dice, Jaccard, or simple mismatch) for analyzing AFLP fingerprints (Kosman & Leonard 2005).

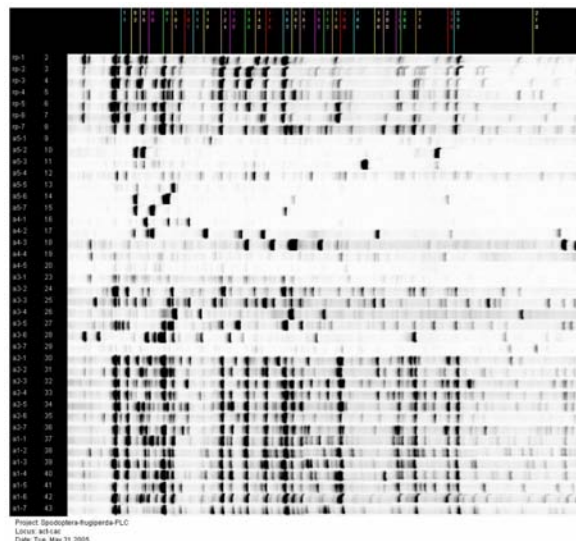


Figure 2. Screen shot of an AFLP gel with markers and lane labels from Saga Generation 2 Software (LI-COR, Lincoln, NE). Note: picture does not represent the length of the full gel, actual gels are 700bp.

Dendrograms were constructed to illustrate genetic similarity, following the methodology described by Sneath & Sokal (1973). Bootstrap analysis was used as a way of testing the reliability of the dataset, by the creation of a pseudoreplicate which re-sampled the data 10,000 times using BOOD-P software ver. 3.1 (Coelho 2001). The goodness of fit of the population dendrogram was measured using COPH and MAXCOMP from NTSYSpc (Rohlf 2000). Analysis of molecular variance (AMOVA) was performed to assess the genetic structure and genetic variability between and among the populations. AMOVA analysis worked by partitioning the total variation between and within populations of *S. frugiperda* and was run using the Arlequin program (Schneider et al. 2000). A two-part AMOVA analysis was performed by testing the genetic structure as a factor of variation among individuals within a given population and between populations. Pairwise comparisons were conducted using the Arlequin program (Schneider et al. 2000) to test genetic divergence (F_{ST}). Genetic isolation was tested using the Mantel test with 1000 permutations (Mantel 1967) using NTSYSpc and comparing geographic distance and genetic dissimilarity.

Principle component analysis was run to test genetic isolation using NTSYSpc, and creating an Eigen plot. The principle component analysis is a two-dimensional test that can separate groups into quadrants based on the data. In this analysis, the principal component analysis would give us

information regarding genetic isolation among the various populations.

Results and Discussion

AFLP provided a large number of useable and reproducible markers (Figure 2) to study *S. frugiperda* population genetics. The four primer pair combinations selected to analyze the 23 populations yielded 833 AFLP (56–394 base pairs in size) markers per population (based on population consensus). The primer pair combinations were chosen for their consistency of scorable bands over all populations, polymorphisms, and reproducible banding patterns. Bootstrap analysis of markers indicated that the coefficient of variation of the data (Jaccard index) was 12% explaining 88% of the total variation of the populations, indicating high precision. The coefficient of variation program indicated that the minimum AFLP markers needed per population was 733. Therefore the 833 AFLP markers per population used for the analysis were sufficient for the stability of the UPGMA (unweighted pair group method with arithmetic mean) (Sneath & Snokal 1973) dendrogram. The coefficient of variation test was valuable because the results of the analysis indicated that enough markers were chosen and that primer pair combinations no longer needed to be screened.

The mean genetic diversity (Table 3) within an individual population was at a level that would

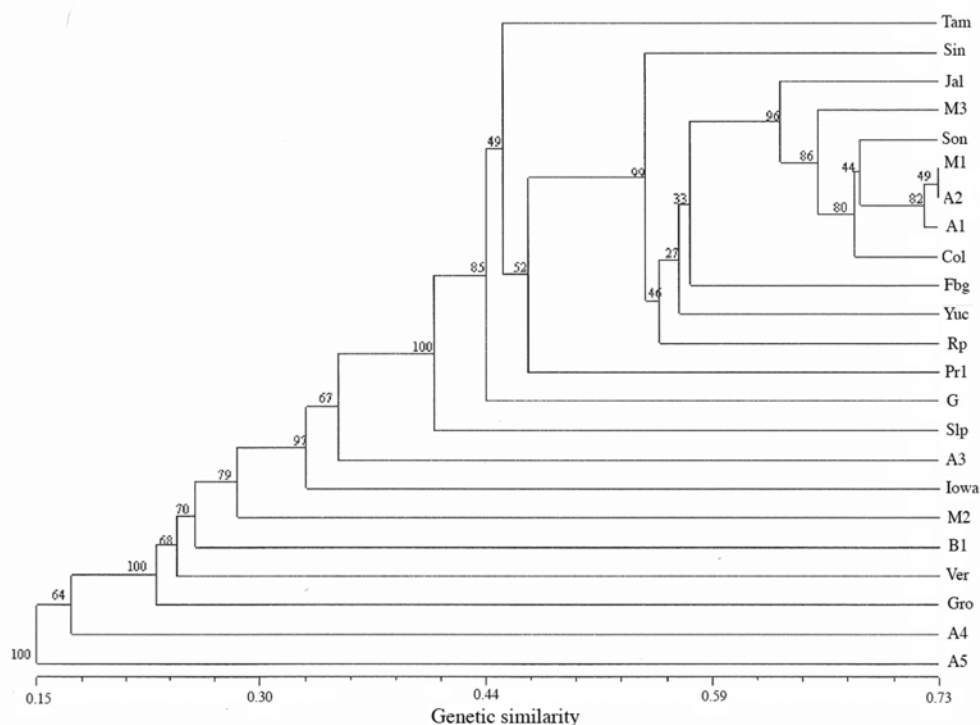


Figure 3. Dendrogram of populations based on similarity coefficient using Jaccard. Bootstrap values are at each node.

Table 3. Gene diversity statistics estimated from AFLP data. The individual heterozygosity (H_S) indicates a lack of homogeneity; the total heterozygosity (H_T) indicates high genetic diversity of all populations; the gene flow (N_M) indicates a low level of gene flow; and the majority of genetic variation is within a given population (G_{ST}).

Population	Polymorphic Loci (%)	H_S^A	H_T^B	N_M^C	G_{ST}^D
Tam	106 (89.08)	0.3359			
Sin	81 (68.07)	0.2437			
Jal	84 (70.59)	0.2912			
M3	77 (64.71)	0.2595			
Son	74 (62.18)	0.2683			
Col	80 (67.23)	0.2842			
Slp	111 (93.28)	0.3336			
Yuc	91 (76.47)	0.3087			
M2	93 (78.15)	0.2215			
M1	37 (31.09)	0.1378			
B1	92 (77.31)	0.2253			
G	98 (82.35)	0.3162			
Rp	80 (67.23)	0.2663			
A5	62 (52.10)	0.1224			
A4	86 (72.27)	0.1698			
A3	106 (89.08)	0.2911			
A2	58 (48.74)	0.1995			
A1	65 (54.62)	0.2256			
Ver	102 (85.71)	0.2221			
Gro	86 (72.27)	0.1888			
Fbg	84 (70.59)	0.2771			
Iowa	91 (76.47)	0.2207			
Pr1	97 (81.51)	0.2943			
Entire Pop	119 (100%)	0.2471	0.4379	0.6476	0.4357

^A H_S : within population gene diversity estimates

^B H_T : total gene diversity estimates

^C N_M : gene flow estimate

^D G_{ST} : magnitude of gene differentiation among populations

indicate a lack of homogeneity ($H_S = 0.2669$), which assures more heterozygosity between individuals within a given population resulting in higher diversity needed for physiological and behavioral strength of a population. The total mean genetic diversity over all populations was high ($H_T = 0.4580$) indicating that the entire population has higher genetic diversity than that of individual populations. Both H_S and H_T values indicate that the level of genetic variability is high between individuals and populations.

G_{ST} measures whether the majority of the genetic variation is within the *S. frugiperda* populations or between the *S. frugiperda* populations. *S. frugiperda* with G_{ST} values approaching 1.0 have a majority of genetic variability between populations. Conversely, a lower G_{ST} value (< 0.5) infers a majority of the genetic variability is within a given population. The G_{ST} value of 0.4172 (Table 3) would indicate that the majority of genetic variability is within given populations of *S. frugiperda* in this study.

Gene flow was measured by using G_{ST} values where $N_M = 0.5(1 - G_{ST})/G_{ST}$ (McDermott & McDonald 1993). N is the number of individuals in a population and M is the proportion of individuals that have immigrated into the

population. Populations that have an N_M value greater than 1, an inference of high gene flow can be assumed. The N_M value of 0.6984 (Table 3) shows a low level of migratory gene flow into a given population.

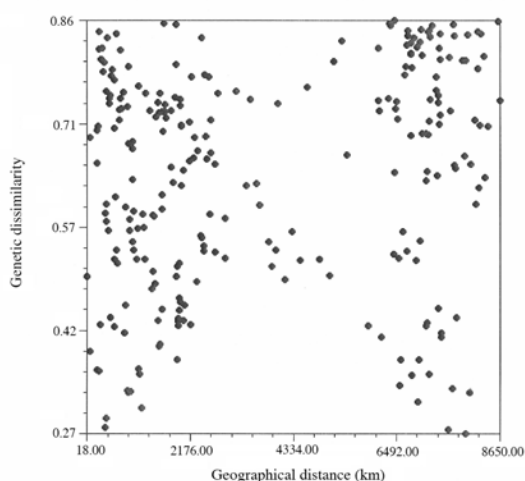


Figure 4. Mantel Test ($n = 161$, $r = 0.1898$, $p = 0.9455$) of genetic dissimilarity (Jaccard) versus geographical distance. The data presented resembles a shotgun blast indicating a lack of correlation between genetic dissimilarity and geographic distance.

The UPGMA consensus tree based on the Jaccard index after bootstrap analysis (Figure 3) shows generally high bootstrap values (BoodP bootstrapping program) at each node of the dendrogram indicating both the reliability of the procedure and the degree of genetic similarity among populations. The UPGMA dendrogram showed that the Argentine population (A5, Santa Fe in maize) was the most dissimilar among populations, while M1 (Jalisco, Mexico in maize) and A2 (Chaco, Argentina in maize) were the most genetically similar (Figure 3). The UPGMA dendrogram did not reveal populations to cluster together solely based on geography (Figure 3). The Jal population clustered with M3, Son, M1, A2, A1, and Col; 98% of the time after 10,000 pseudoreplicates. The overall high bootstrap values indicate confidence in the placement of the populations on the UPGMA dendrogram using the BoodP program.

The AMOVA results (Table 4) revealed that 33.28% of the genetic variability is between populations. The majority of genetic variability (66.72%) is within given populations. Pairwise comparisons (Arlequin program) of $F_{ST} = 0.3328$ value among all populations confirmed the absence of a geographical associated genetic structure and some genetic isolation.

The genetic isolation by distance was evaluated by a Mantel (1967) test and showed that the matrices representing genetic dissimilarity and geographical distances were not significantly correlated ($n = 161$, $r = 0.1898$, $p = 0.9455$) (Figure 4). These results indicate that there is no correlation between the geographic distance of individuals or populations from each other and the genetic dissimilarity.

Principle component analysis (Figure 5) showed that most populations did not cluster in any consistent location on the graph. However, 11 populations clustered closely but no inferences can be made. Seven of the populations were from Mexico (Sin, Jal, Col, M1, M3, Yuc, Son, collected from maize); 2 populations were from Argentina (A1, A2, collected from maize); 2 populations were from Mississippi (Rp, collected from princess tree, and Fbg, collected from bermudagrass). The majority of the populations were randomly spread out among the graph. The inclusion of very geographically distant populations and lack of separation into quadrants by geographic regions indicates a lack of genetic isolation between the 23 populations.

This work proves that *S. frugiperda* is highly genetically variable and that future studies should incorporate more populations from a large geographic area to obtain more genetic information on host strain, geographic isolation, and reproductive incompatibility. All populations in this study were distinguishable by the selected AFLP markers by calculating a similarity matrix using the Jaccard similarity coefficient. Furthermore, the majority of the genetic variability is within individual populations and not between populations, indicating minor gene flow. This type of molecular research has practical

Table 4. Analysis of Molecular Variance (Amova) Table. The majority of the genetic variation is within a given population, the F_{ST} value indicates low gene flow between populations.

Source of Variation	Degrees of Freedom	Sum of Squares	Variance Components	Percentage of Variation
Among Populations	22	1830.55	9.24 Va	33.28
Within Populations	138	2556.86	18.53 Vb	66.72
Total	160	4387.4	27.77	
Fixation Index	F_{ST} :	0.2911		

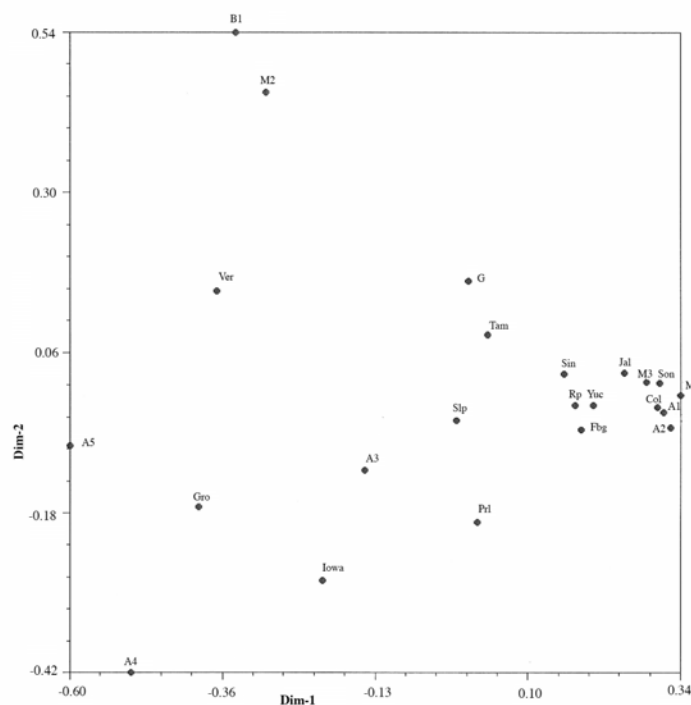


Figure 5. Principle Component Analysis; the clustering was generally non-significant. The data points are random and do not separate into quadrants indicating a lack of genetic isolation. Populations analyzed and presented in the dendrogram and the principle component analysis did not cluster according to the geography or the host plant they were collected from. The lack of population clustering was expected even though it is not consistent with previous research on *S. frugiperda*, due to the high number of populations covering a large geographic area.

applications for pest control in agriculture. The better we understand the population genetics of this pest, the better we can answer questions about whether or not a control method will work on the entire population or just a segment. Future research of *S. frugiperda* using AFLP and the markers selected from this study could become useful in tracking populations over time.

Acknowledgements

The authors would like to thank Claudia Gianni (Monsanto Argentina) and Marcelo Silveira (Monsanto Brazil) for their contribution of collecting samples.

References

- Black WC, Duteau NM. 1997. RAPD-PCR and SSCP analysis for insect population genetic studies. In: Crampton JM, Beard CB, Louis C, editors. *The molecular biology of insect disease vectors: a methods manual*, pp. 361–373. Chapman & Hall.
- Busato GR, Grützmacher AD, De Oliveira AC, Vieira EA, Zimmer PD, Kopp MM, Bandeira J, De M, Magalhães TR. 2004. Analysis of the molecular structure and diversity of *Spodoptera frugiperda* (J.E. Smith) (Lepidoptera: Noctuidae) populations associated to the corn and rice crops in Rio Grande do Sul State, Brazil. *Neotropical Entomology* 33: 709-716.
- Coelho ASG. 2001. DBOOT, BOOD, and BOOD-P Software. Dept de Biologia Geral ICB/UFG.
- Dowling TE, Moritz C, Palmer JD, Rieseberg LH. 1996. Nucleic acids III: analysis of fragments and restriction sites. In: Hillis DM, Moritz C, Mable BK, editors. *Molecular systematics 2nd edition*. pp. 249–320., Sinauer, Sunderland, MA.
- Hawthorne DJ. 2001. AFLP-based genetic linkage map of the Colorado potato beetle *Leptinotarsa decemlineata*: Sex chromosomes and a pyrethroid-resistant candidate gene. *Genetics* 158: 695-700.
- Hoy MA. 2003. *Insect molecular genetics – an Introduction to principles and applications, second edition*. Academic Press, San Diego, CA.
- Johnson SJ. 1987. Migration and life history strategy of the fall armyworm, *Spodoptera frugiperda* in the Western Hemisphere. *Insect Science and Its Application* 8: 543-549.
- Kosman E, Leonard KJ. 2005. Similarity coefficients for molecular markers in studies of genetic relationships between individuals for haploid, diploid, and polyploidy species. *Molecular Ecology* 14: 415-424.

- Lopez-Edwards M, Hernandez-Mendoza JL, Pescador-Rubio A, Molina-Ochoa J, Lezama-Gutiérrez R, Hamm JJ, Wiseman BR. 1999. Biological differences between five populations of fall armyworm (Lepidoptera: Noctuidae) collected from corn in Mexico. *Florida Entomologist* 82: 254-262.
- Mantel N. 1967. The detection of disease clustering and a generalized regression approach. *Cancer Research* 27: 209-220.
- Mcdermott JM, McDonald BA. 1993. Gene flow in plant pathosystems. *Annual Review of Phytopathology* 31: 353-373.
- McMichael M, Prowell DP. 1999. Differences in amplified fragment-length polymorphisms in fall armyworm (Lepidoptera: Noctuidae) host strains. *Annals of the Entomological Society of America* 92: 175-181.
- Meagher RL, Gallo-Meagher M. 2003. Identifying host strains of fall armyworm (Lepidoptera: Noctuidae) in Florida using mitochondrial markers. *Florida Entomologist* 86: 450-455.
- Nagoshi RN, Meagher RL. 2003. FR tandem-repeat sequence in fall armyworm (Lepidoptera: Noctuidae) host strains. *Annals of the Entomological Society of America* 96: 329-335.
- Parsons YM, Shaw KL. 2002. Mapping unexplored genomes: a genetic linkage map of the Hawaiian cricketet *Laupala*. *Genetics* 162: 1275-1282.
- Pashley DP. 1986. Host-associated genetic differentiation in fall armyworm (Lepidoptera: Noctuidae): a sibling species complex?. *Annals of the Entomological Society of America* 79: 898-904.
- Pashley DP, Johnson SJ, Sparks AN. 1985. Genetic population structure of migratory moths: the fall armyworm (Lepidoptera: Noctuidae). *Annals of the Entomological Society of America* 78: 756-762.
- Pashley DP, Martin JA. 1987. Reproductive incompatibility between host strains of the fall armyworm (Lepidoptera: Noctuidae). *Annals of the Entomological Society of America* 80: 731-733.
- Pashley DP, Quisenberry SS, Jamjanya T. 1987. Impact of fall armyworm (Lepidoptera: Noctuidae) host strains on the evaluation of Bermuda grass resistance. *Journal of Economic Entomology* 80: 1127-1130.
- Pashley DP, Hammond AN, Hardy TN. 1992. Reproductive isolating mechanisms in fall armyworm host strains (Lepidoptera: Noctuidae). *Annals of the Entomological Society of America* 80: 400-405.
- Pashley DP, Hardy TN, Hammond AM. 1995. Host effects on developmental and reproductive traits in fall armyworm strains. (Lepidoptera: Noctuidae). *Annals of the Entomological Society of America* 88: 748-755.
- Reineke A, Karlovsky P, Zebitz CPW. 1999. Amplified fragment length polymorphism analysis of different geographic populations of the gypsy moth, *Lymantria dispar* (Lepidoptera: Lymantriidae). *Bulletin of Entomological Research* 89: 79-88.
- Rohlf FJ. 2000. NTSYS-pc numerical taxonomy and multivariate analysis system version 2.1 manual. Applied Biostatistics, New York.
- Schneider S, Roessli D, Excoffier L. 2000. Arlequin: a software for population genetics data analysis. Version 2.000. Genetics and Biometry Laboratory, Department of Anthropology, University of Geneva, Switzerland.
- Sneath PHA, Sokal RR. 1973. *Numerical Taxonomy*. Freeman, San Francisco.
- Sparks AN. 1986. Fall armyworm (Lepidoptera: Noctuidae) potential for area-wide management. *Florida Entomologist* 69: 603-614.
- Takami Y, Koshio C, Ishii M, Fujii H, Hidaka T, Shimizu I. 2004. Genetic diversity and structure of urban populations of *Pieris* butterflies assessed using amplified fragment length polymorphism. *Molecular Ecology* 13: 245-258.
- Tan YD, C. Wan C, Zhu Y, Lu C, Xiang Z, Deng HW. 2001. An amplified fragment length polymorphism map of the silkworm. *Genetics* 157: 1277-1284.
- Timmermans MJTN, Ellers J, Marien J, Verhoef SC, Ferweda EB, Van Straalen NM. 2005. Genetic structure in *Orchesella cincta* (Collembola): strong subdivision of European populations inferred from mtDNA and AFLP markers. *Molecular Ecology* 14: 2017-2024.
- Veenstra KH, Pashley DP, Ottea JA. 1995. Host-plant adaptation in fall armyworm, host strains: comparison of food consumption, utilization, and detoxification enzyme activities. *Annals of the Entomological Society of America* 88: 80-91.
- Vos P, Hogers R, Bleeker M, Reijans M, Van De Lee T, Hornes M, Frijters A, Pot J, Peleman J, Kuiper M, Zabeau M. 1995. AFLP: a new technique for DNA fingerprinting. *Nucleic Acids Research* 23: 4407-4414.
- Yeh FC, Boyle TBJ. 1997. POPGENE Microsoft Windows-based software for population genetic analysis. A joint project development by Francis C. Yeh, University of Alberta and Tim Boyle, Center for International Forestry Research, Bogor, Indonesia. 29p.